



A.H. BEARD

PREMIUM SLEEP SINCE 1899



Renew

Adjustable Base Assembly and Operation Manual

PLEASE READ THESE INSTRUCTIONS CAREFULLY
AND RETAIN FOR FUTURE REFERENCE

Contents

Safety precaution and usage guide	3
Parts list	5
Base overview	6
Assembly guide	7
Accessing the Zero clearance Adjustable Base Feature....	10
Operating your adjustable base	11
Wireless remote pairing operation	12
Split-base synchronisation	12
Power outage	12
Headboard bracket installation	13
Adjustable base guarantee	14

REGISTER YOUR PRODUCT PURCHASE

Registering your product purchase with us will help us to provide faster service should you need to contact us in the future.

ahbeard.com/customer-care

Safety precaution and usage guide

**ATTENTION: MAKE SURE YOU READ ALL INSTRUCTIONS
BEFORE USING YOUR ADJUSTABLE BASE.**

SAVE THESE INSTRUCTIONS.

To reduce the risk of electronic shock, burns, fire or injury to users, please follow these instructions:

- Packing material may pose a choking or smothering hazard to small children, please dispose of immediately after unpacking.
- To avoid injury do not operate your adjustable base with small children on or under your adjustable base.
- This appliance is not intended for use by persons (including children) with reduced physical, sensory or mental capabilities, or lack of experience and knowledge, unless they have been given supervision or instruction concerning use of the appliance by a person responsible for their safety.
- Children should be supervised to ensure that they do not play with the appliance.
- Unplug the base power cord from the power outlet before installing, servicing or cleaning any part of the base.
- Before disconnecting the power cable return the base to the flat position and stop all operations.
- Keep the power cord away from water and heated surfaces. Immediately stop use of the bed base and contact an authorised service centre if the base has gotten wet, has a damaged cord or plug, or if it is not working properly.
- Never operate the base when the air openings on the electronic system are blocked. Do not drop or insert any object into any opening.
- Do not use accessories/attachments that are not recommended by the manufacturer.
- If using a headboard, ensure it is installed against a wall to prevent from collapsing on persons, children or pets.

- Only use this bed base for its intended use as described in this manual.

To reduce the risk of manual handling injuries.

- When lifting have at least two people to support load.
- Keep your back straight when lifting with your knees

Guarantee Warning:

Do not unscrew, open or tamper with motors, remote control (except battery compartments), or any other electronic components. Any alterations to components will not be covered by warranty. For complete guarantee information refer to page 13.

In-Home Use and Hospital Disclaimer:

This adjustable bed base is designed for in-home use only. This base was not designed for use outdoors or in hospitals and is not designed to meet medical standards. Do not use with or near oxygen therapy equipment, aerosol spray products or near explosive gases.

Do not use the optional massage function on your adjustable base if you have an artificial cardiac pacemaker before consulting your physician.

Restrictions:

The lift motors are not designed to operate continuously for more than two (2) minutes in an eighteen (18) minute time period or approximately 10% duty cycle. The optional massage function should not be operated for more than two (2) hours within a six (6) hour period.

To keep your adjustable base performing well for its lifetime:

Do:

- When replacing batteries in your remote control remove full set of old batteries and replace with a full new set.
- Remove the batteries from your remote control and motor if your adjustable base will not be used for a long period of time to prevent damage caused by battery leakage.
- Place your adjustable base flat on the ground to avoid damage.
- Use a compatible mattress for your adjustable base. A memory foam mattress or latex mattress is recommended. Some spring mattresses or pocket spring mattresses, for example, may not be suitable for use on your adjustable base. Consult your mattress specialist to verify your mattress is compatible.

Don't:

- Sit on the head or leg section while in the raised position. It can damage your adjustable base.
- Lift or move the base during operation. It might cause damage to your base.
- Lift or move your adjustable base by holding the mattress platform. If it is necessary to lift or move your adjustable base, hold the cross bars of its metal frame.

Power Ratings:

Input: AC100–240V 50/60Hz 1.5A

Output: DC29V 1.8A


Protection Class: Class

SAVE THESE INSTRUCTIONS

SERVICING OF DOUBLE-INSULATED PRODUCTS

In a double-insulated product, two systems of insulation are provided instead of grounding. No grounding is provided on a double insulated product. Nor is a means for grounding to be added to the product. Servicing a doubleinsulated product requires extreme care and knowledge of the system and is to be done only by qualified service personnel.

Replacement parts for a double-insulated product must be identical to the parts they replace. A double-insulated product is marked with the words "DOUBLE INSULATION" or "DOUBLE INSULATED."

The symbol  is also able to be marked on the product.

Parts List

CHECK AND CONFIRM THE FOLLOWING ITEMS ARE INCLUDED IN THE CARTON BEFORE DISPOSING OF ANY PACKING MATERIALS.



Remote Control (1)



AC Main Cable (1)



Power Supply (1)



AAA Batteries (3)



Mattress Retainer Bar (1)



Legs (Three pieces) (6)



Adjustright Clip-locks (2)



R-Clips (2)



Clevis Pins (2)

PARTS FOR INSTALLING HEADBOARD



Bolts for Headboard (8)



Nuts for Headboard (8)



Washers (16)

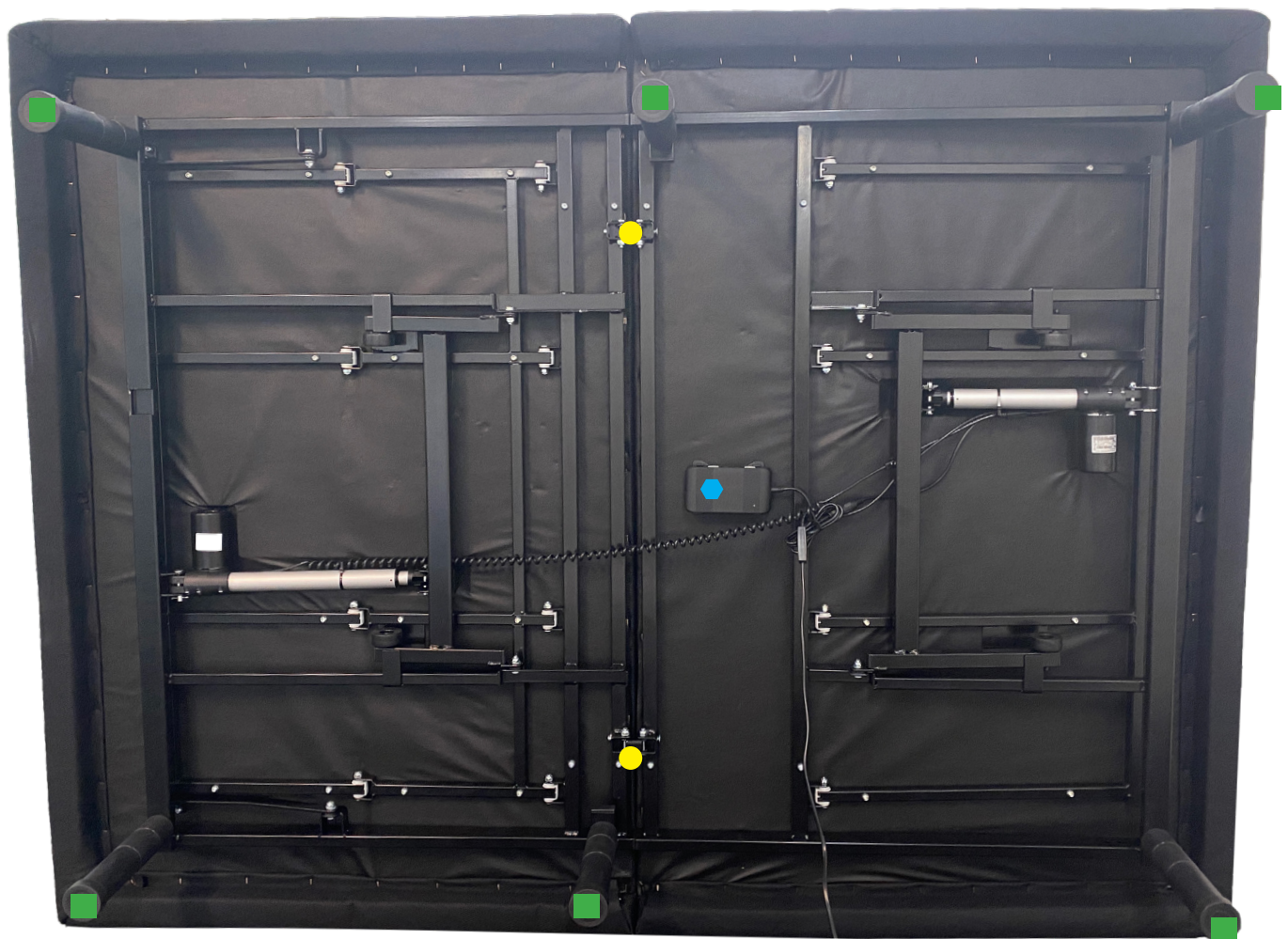


Headboard Brackets A (2)



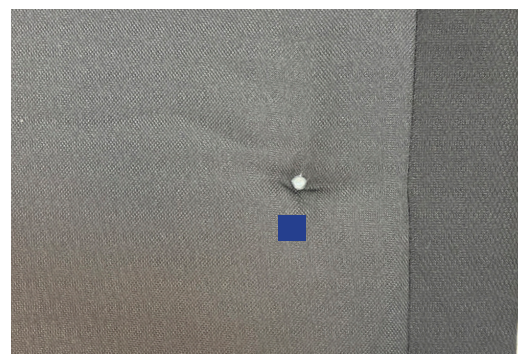
Headboard Brackets B (2)

Base Overview



KEY

- 6 x legs
- Clevis pins and R-clips
- ⬢ Pairing device
- Screws for clip-locks



Assembly Guide

TWO PEOPLE ARE REQUIRED TO SET UP YOUR ADJUSTABLE BASE

STEP 1:



Place the carton flat on the floor close to the area where the base will be set up. Ensure that the printed lid is facing up.

STEP 2:



Open the box, remove the packaging and set the small boxes aside. Unfold the base.

STEP 3:

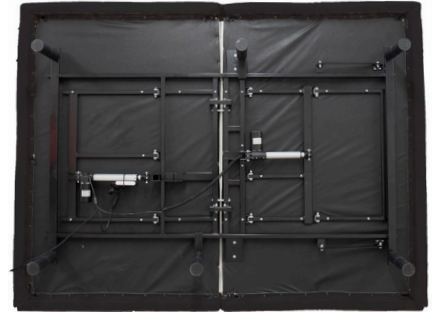


Take out 6 base legs.

Note: Each leg is made up of 3 pieces. Height can be adjusted by using one or two or three pieces for each leg. (See Accessing the Zero clearance Adjustable Base Feature).

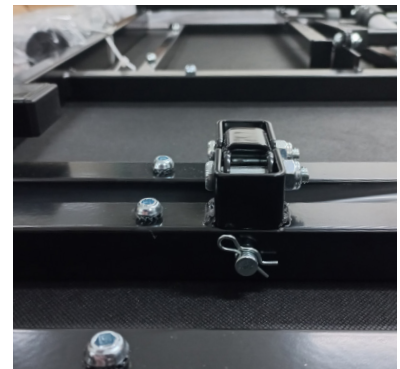
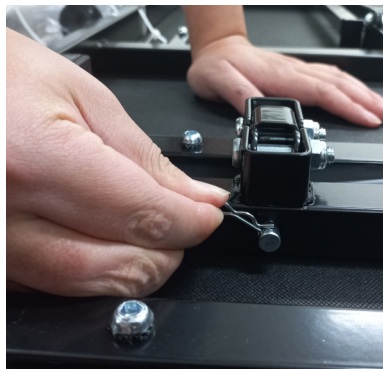
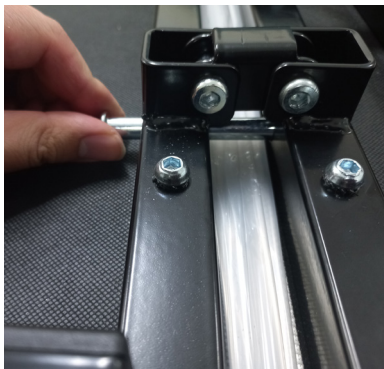
Assembly Guide

STEP 4:



Once the height is decided, secure the 6 legs tightly by twisting them onto the adjustable base. Place the cap on each of the legs. Note: Ensure there is no gap between the legs and the base.

Step 5:



Secure the base by slotting the clevis pin through the hole. Add the R- clip through the hole at the bottom of the pin. Repeat this process with the second Clevis pin and R-clip. See base overview for location of clevis pins and R-clips.

Step 6:



With assistance carefully turn the adjustable base over onto its legs.

TWO PEOPLE ARE REQUIRED WHEN TURNING THE BASE OVER. DO NOT APPLY EXCESSIVE PRESSURE. THE INSTALLED LEGS COULD GET DAMAGED OR BENT IF YOU LEAN YOUR ADJUSTABLE BASE ON THE LEGS.

Note: Do not recline the base against the installed legs to flip it over.
Do not drag the base across the floor.

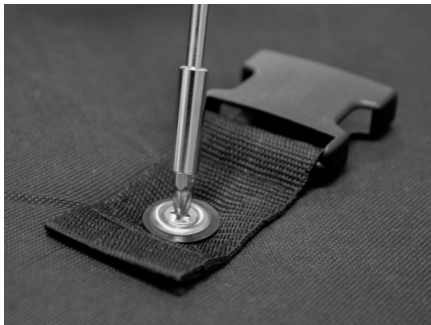
Operating your Adjustable Base

Optional Step 7:



If the mattress does not have Adjustright. Attach the retainer bar by sliding it into place.

Optional Step 7:



A.H. Beard mattress attached to base using Adjustright system

If you have purchased you're A.H. beard mattress with Adjustright clip-locks then remove the screws using the a screwdriver. Place the female Adjustright clip-lock over the hole and attach the screws. Ensure the Adjustright clip-locks are facing the same way. The mattress Adjustright clip-locks can be attached to the base with Adjustright clip-locks.

Step 8:



Attach the power cord to the power supply box. Connect the power supply to the power point. A surge protector (not included) is recommended to extend the life of your adjustable base.

INSTALLATION COMPLETE

Accessing the Zero clearance Adjustable Base Feature



Follow the steps in the Assembly Guide but skip steps 3 and 4. Do not screw the legs in and continue with step 5. The adjustable bed base can then be lifted with two people, hold the cross bars of its metal frame. Then place on top of the base.

Note: If you have a slat base, it is recommended to place the legs through the slats to provide support and rigidity.

Operating your Adjustable Base

Press and hold the button
to RAISE BACK REST.
Stops when released

Press and hold the button
to RAISE LEG REST.
Stops when released

Zero Gravity
Preset Position

Flash Light

Press and hold the button
to LOWER BACK REST.
Stops when released

Press and hold the button
to LOWER LEG REST.
Stops when released

Flat
Preset Position



Pairing your remote & base

Your new base is already paired with the remote supplied. If the base does not initially operate, you may need to reconnect the remote and base following the instructions below.



1. Press the pairing button located on the control box twice until the LED light turns on.
2. Once the LED light turns on, you now have 10 seconds to complete the pairing process. Press and hold the Raise back rest and Raise leg rest buttons simultaneously until the LED light on the remote flows continuously and an audible beep is heard.

IMPORTANT NOTES:

If multiple bases are being used in the same house or area, each base should be configured with its own remote control. Do not pair both control boxes to the same remote or movement could occur on additional base unexpectedly. Please repeat the above steps if the pairing operation failed.



SYNCHRONISING TWO SPLIT BASES

If you have a split-base and require simultaneous operation of the two bases, you must first successfully pair the first base control box to your remote control using steps 1 and 2 from above. For the second base control box please follow the steps below.

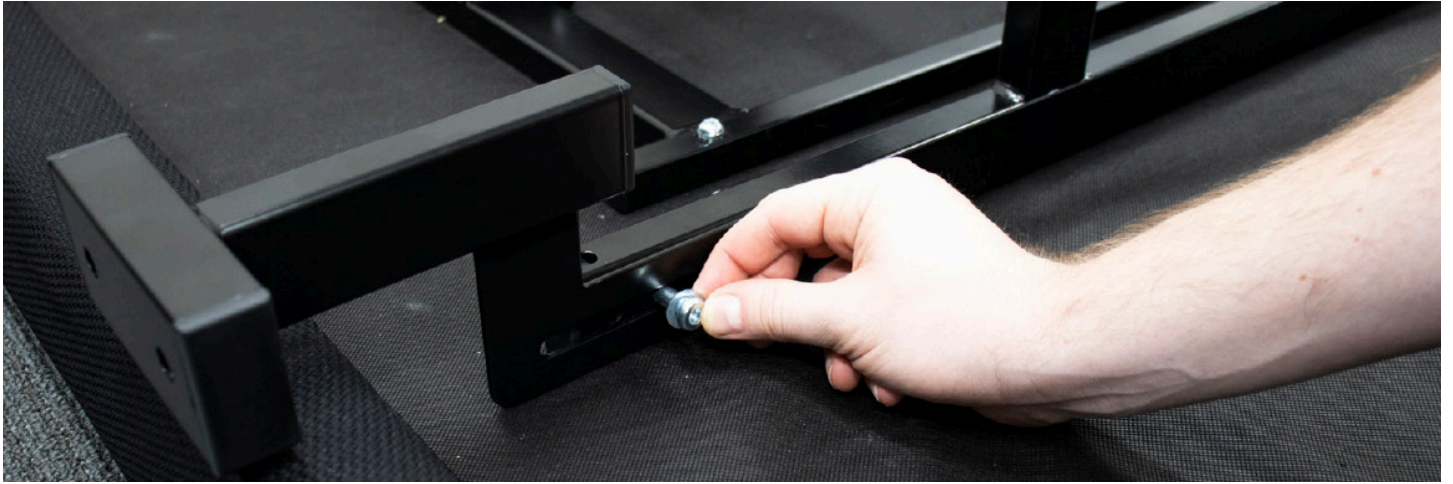
1. Press the pairing button located on the control box twice until the LED light turns on.
2. Once the LED light turns on, you now have 10 seconds to complete the pairing process. Press and hold the Lower back rest and Lower leg rest buttons simultaneously until the LED light on the remote flows continuously.
3. Return to page 8 to complete installation.

POWER OUTAGE

In the case of a power outage, insert two (2) 9V batteries (not included) into the battery compartment of the power supply. This option can be used as back up power to return your adjustable base to the flat position. Do not sit on the adjustable base or apply any load when using the back up battery power to return your base to the flat position.

Headboard bracket installation

STEP 1:



Place headboard bracket B on the outside edge of the head of the base.

1. Put the bolt through the washer and insert in one side of the pre-drilled hole.
2. Place the nut and another washer on the other side of the pre-drilled hole.
3. Tighten the nut using the provided allen key and spanner.
4. Repeat steps 1 – 3 for all four bolts (2 per side).

STEP 2:



The bracket A allows adjustment to meet the dimension of different headboards. After choosing desired pre-drilled holes on the bracket, pass the bolts with the washer through the holes on brackets. Fasten these bolts, washers and nuts using a wrench.

STEP 3:

Please refer to the mounting instructions of your specific headboard when attaching to these brackets.

Adjustable Base Guarantee

Congratulations on the purchase of your new A.H. Beard product. We are confident that it will provide years of sleeping comfort.

A.H. Beard has been setting the standard for quality bedding since 1899. However in the unlikely event that a product fails to meet our high standards, A.H. Beard offers a guarantee to the original purchaser to repair the product against faulty workmanship and materials for a period of 10 years.

In order to make a claim under this guarantee you must retain your original receipt as proof of purchase, and the product serial number, which can be found on the back of this leaflet or inside the battery compartment of the base remote control.

For prompt service, please register your purchase on our website:
ahbeard.com/customer-care

RIGHTS UNDER THE AUSTRALIAN CONSUMER LAW AND THE CONSUMER GUARANTEES ACT IN NEW ZEALAND

The benefits given by the guarantee set out in this document are in addition to any other rights and remedies you may have under a law in relation to the goods to which the guarantee relates.

Our goods come with guarantees that cannot be excluded under the Australian Consumer Law and the Consumer Guarantees Act in New Zealand. You are entitled to a replacement or refund for a major failure and for compensation for any other reasonably foreseeable loss or damage. You are also entitled to have the goods repaired or replaced if the goods fail to be of acceptable quality and the failure does not amount to a major failure.

RIGHTS UNDER THIS GUARANTEE

A.H. Beard provides the original purchaser of this product a guarantee against defects in workmanship and materials for a period of 10 years.

If, during the guarantee period, a defect caused by faulty workmanship or materials appears, A.H. Beard will repair your adjustable base within a reasonable time after receiving your valid guarantee claim. Note that the guarantee period applies to the original purchaser and commences on the date of purchase of this product.

A.H. Beard reserves the right to charge an up-front call out fee prior to an inspection taking place at any stage during the life of the base. This fee will be refunded should a manufacturing fault be discovered.

If identical materials are not available at the time A.H. Beard repairs your base under this guarantee, A.H. Beard reserves the right to substitute materials of comparable quality.

HOW TO CLAIM YOUR GUARANTEE

If you want to make a claim under a guarantee in this document please contact A.H. Beard via one of the methods below

By telephone in Australia on 1300 654 000

By telephone in New Zealand on 0800 242 327

Headboard bracket installation

- Online at www.ahbeard.com/customercare
- By email to customercare@ahbeard.com
- Mail in Australia to A.H. Beard Pty Limited, PO Box 41, Padstow NSW 2211
- Mail in New Zealand to A.H. Beard Pty Limited, 260 Roscommon Road, Wiri 2104

HOW TO CLAIM YOUR OUT-OF-POCKET COSTS

Unless otherwise stated in this document, you will bear the cost of claiming under this guarantee. If you are entitled to claim labour or transportation costs, approved by A.H. Beard before they were incurred, and which directly relate to the repair of the base, please send your receipt as proof of payment of these costs to:

A.H. Beard Pty Limited, PO Box 41, Padstow NSW 2211 if you are located in Australia. A.H. Beard Pty Limited, 260 Roscommon Road, Wiri 2104 if you are in New Zealand.
A.H. Beard will then reimburse you for the costs incurred.

ADDITIONAL TERMS

THIS GUARANTEE DOES NOT COVER:

- Any defect or damage to the base as a result of:
 - i. mishandling, misuse or abuse of the adjustable base (including during transportation);
 - ii. any modification to the base which has been made without the prior written consent of A.H. Beard;
 - iii. repairs to or the replacement of a part by a person not authorised by A.H. Beard to perform the repair or replace the part;
 - iv. connection to an improper power supply;
- v. the base being used in any environment or a commercial setting for which it was not intended.
- Any damage to mattresses, bed coverings, bedding cables, electrical cords or accessories supplied by retailers;
- The cost of service calls not expressly authorised by A.H. Beard for the purpose of educating you about the A.H. Beard Adjustable Base or to locate proper functioning power outlets;
- Normal wear and tear, or damage caused by mishandling, abuse, misuse or negligence including folding, bending, standing on or jumping on the base
- A base that, on inspection by A.H. Beard, is found to be stained or in an unsanitary condition

Except as expressly stated, this guarantee does not include any right to be reimbursed or compensated for physical or financial injury, loss, damage, expense, time or inconvenience (whether direct or indirect) arising out of the occurrence of the defect in the base or your inability to use the base.

Any use of this product other than the use for which it was originally intended is not the responsibility of A.H. Beard.



A. H. BEARD

PREMIUM SLEEP SINCE 1899

A.H. Beard Pty Ltd
1/35 Bryant Street
Padstow NSW Australia 2211 Phone:
1300 654 000
Email: customercare@ahbeard.com
www.ahbeard.com

A.H. Beard Pty Ltd
260 Roscommon Road
Wiri Auckland New Zealand 2104
Phone: 0800 242 327
Email: customercare@ahbeard.com
www.ahbeard.com